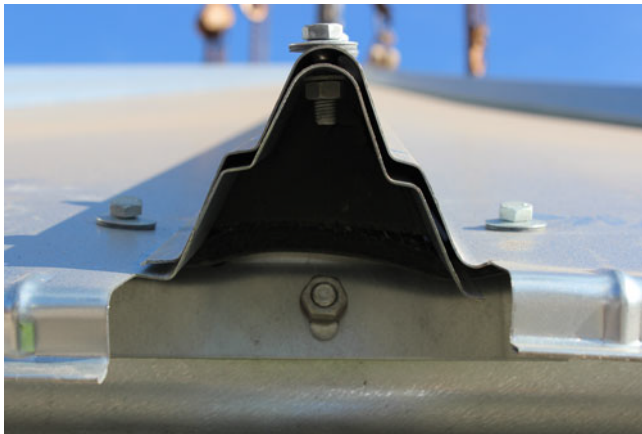


FOAM
EAVE CLOSE

ROOF



TECHNICAL SPECIFICATIONS

Sealing system composed for insulation parts type FOAM located on silo eave and the roof collar to avoid snow, rain, insects, animals, etc.

- Better waterproofing through full sealing roof – cylinder
- Air movement focused on aeration roof

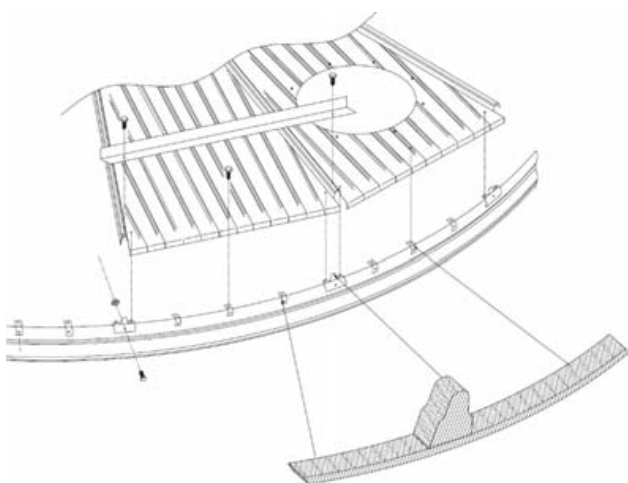
PARTS AND MATERIALS

1 INSULATOR ROOF WAVE

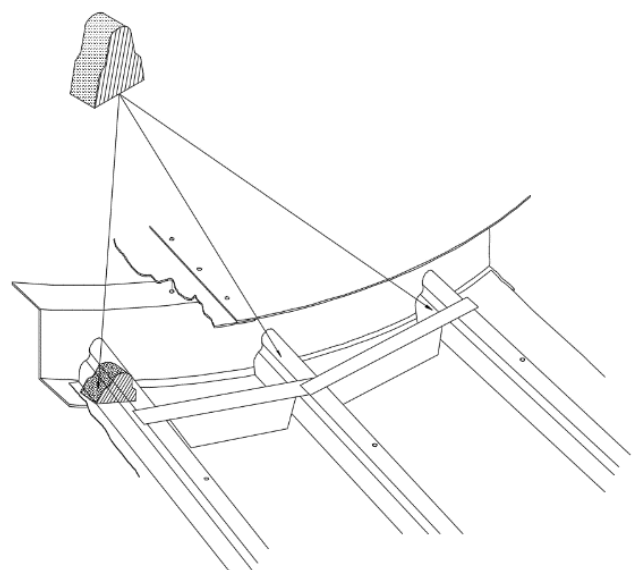
- On the roof collar
- MATERIAL: Cross-linked polyethylene foam
- Density: 28 Kg/ m3
- Lengthening 23°C (longitudinal): 121%
- Lengthening a 23°C (transversal): 115%
- Water capacity: 1%

2 INSULATOR ROOF EAVE

- On the roof eave
- MATERIAL: Cross-linked polyethylene foam
- Density: 28 Kg/ m3
- Lengthening 23°C (longitudinal): 121%
- Lengthening a 23°C (transversal): 115%
- Water capacity: 1%



INSULATOR ROOF WAVE



INSULATOR ROOF EAVE