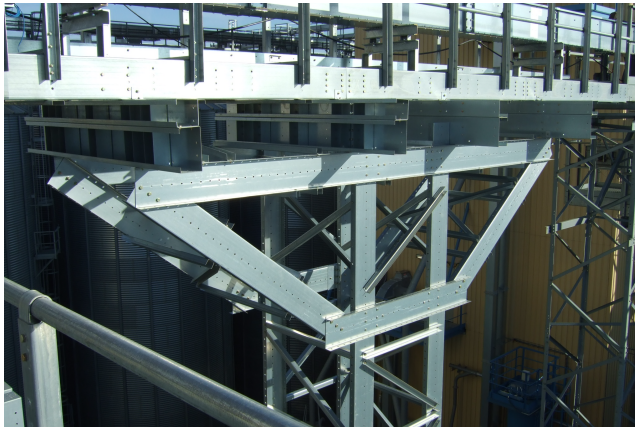


COLD FORMED PROFILE

FOUNDATION



FILE 6.5
VERSION 1
COD. ASCOL01
17/10/2019



PARTS AND MATERIALS

- 1 **ANCHOR PLATE**
 - Connecting the pillars to the foundation
 - Material: A-42b Galvanized steel
- 2 **"U" 263 PILLAR**
 - "U" 263 profile cold formed profile all along the column height.
 - Material: Galvanized steel S280GD Z 600 MAC t= 3mm
- 3 **SPLICE**
 - "U" 254x5928mm profile, cold formed profile connecting the pillars with the anchor plate.
 - Material: Galvanized steel S280 GD Z 600 MAC t= 3mm
- 4 **BRACING**
 - "U" 60x50 cold formed profile.
 - Material: Galvanized steel S280 GD Z 600 MAC t= 3mm
- 5 **CONNECTION TO SILO**
 - "L" 50x50x5 profiles connecting the column to the silo.
 - Material: A-42b Galvanized steel
- 6 **UPPER "U" PROFILE**
 - "U" 263 cold formed profile, supporting the "C" profile where the catwalk is placed.
 - Material: Galvanized steel S280GD Z 600 MAC t= 3mm
- 7 **LOWER "U" PROFILE**
 - "U" 263 cold formed profile.
 - Material: Galvanized steel S280GD Z 600 MAC t= 3mm
- 8 **DIAGONAL**
 - "U" 263 cold formed profile connecting the upper "U" profile with lower "U" profile.
 - Material: Galvanized steel S280GD Z 600 MAC t= 3mm

TECHNICAL SPECIFICATIONS

Acting as catwalk support at the same height as the roof Support.

It is used when the double wall support with overhang is not a suitable solution.

A column from the ground to the height limited by the roof support, it is braced to the silo and an overhang is placed in the upper part.

The overhang is formed by two structural systems (inverted pyramid shape), braced to each other.

When the column is placed at the beginning/end of the silo row, one wing overhang is placed in the upper part.

On the overhang, 4 "C" profiles are placed supporting the catwalk.

The most used base is 1070mm x 1216mm, with overhangs 2128, 3344 and 4560mm.

