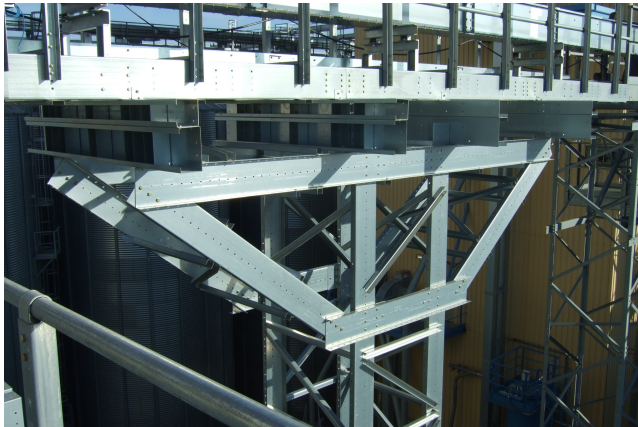


HOT ROLLED
PROFILE
COLUMN

FOUNDATION



FILE 6.6
VERSION 1
COD. ASCOL0233
20/01/2020



PARTS AND MATERIALS

- 1 ANCHOR PLATE
 - Connecting the pillars to the foundation.
 - Material: Galvanized steel S275JR
- 2 PILLAR “L”
 - “L” 100x100x10 ó 120x120x12 profile, hot rolled profile, all along the column height.
 - Material: Galvanized steel S275 JR
- 3 SPLICE
 - Rectangular splice 600x100x10mm or 600x120x10mm for pillars connection.
 - Material: Galvanized steel S275 JR
- 4 BRACING
 - “L” 50x5 hot rolled profile.
 - Material: Galvanized steel S275 JR
- 5 CONNECTION TO SILO
 - “L” 50x5 hot rolled profile connecting the column to the silo.
 - Material: Galvanized steel S275 JR
- 6 UPPER “UPN” PROFILE
 - UPN200 profile, hot rolled profile supporting the “C”profile where the catwalk is placed.
 - Material: Galvanized steel S275 JR
- 7 LOWER “UPN” PROFILE
 - UPN200 profile, hot rolled profile
 - Material:Galvanized steel S275 JR
- 8 DIAGONAL
 - UPN200 hot rolled profile, connecting the upper UPN to the lower one.
 - Material: Galvanized steel S275 JR

TECHNICAL SPECIFICATIONS

The structure acts as catwalk Support at the same height as the roof support. It is used when the cold formed column solution is not enough.

Column erected from the ground to the roof Support height, braced to the silo with an overhang on the upper part. The overhang is formed by two structural systems (inverted pyramid shape), braced to each other.

On the overhang, 6 “UPN” profiles are placed supporting the catwalk.

BASE (mm)	OVERHANG (mm)
1200 – 1200	5000 ó 6000
1260 – 1260	8000
1260 – 2000	8000 ó 10000
2000 – 2000	8000 ó 10000

