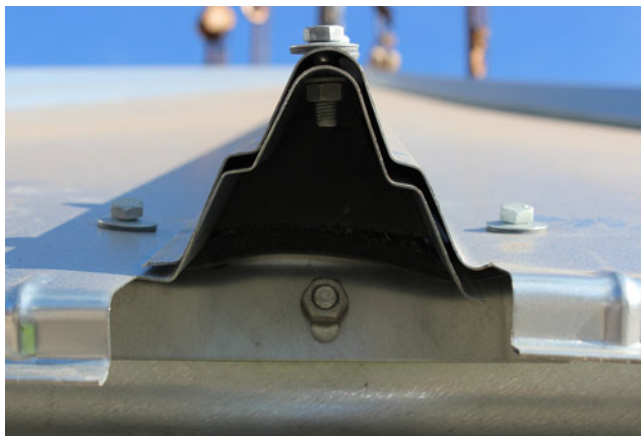


FOAM  
EAVE CLOSE

ROOF



## TECHNICAL SPECIFICATIONS

Sealing system composed for insulation parts type FOAM located on silo eave and the roof collar to avoid snow, rain, insects, animals, etc.

### USES

- Better waterproofing through full sealing roof – cylinder
- Air movement focused on aeration roof

**INCOMPATIBILITIES** Incompatible with the eaves skirt. The eaves closure is placed on the wave of the roof sector in its initial and final part and is made up of extruded polystyrene pieces, while the eaves skirt is made up of a folded sheet placed in the eaves connection.

**INCLUDES** In ceilings that have more than one overlapping sector, the overlap FOAM is included

**RESTRICTIONS** Not usable in silos of 3 and 3.5 meters.

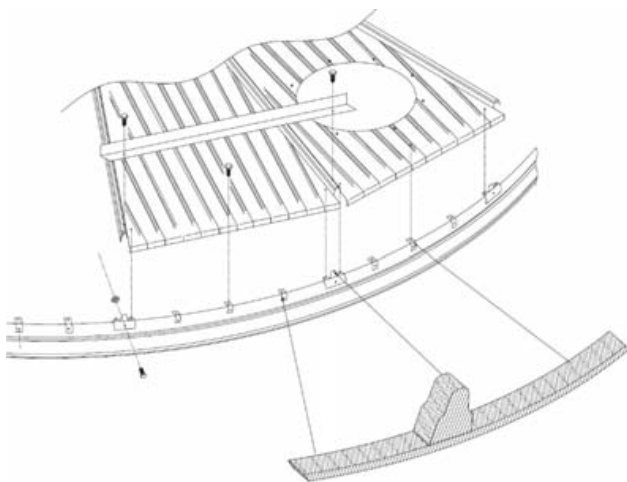
## PARTS AND MATERIALS

### 1 INSULATOR ROOF WAVE

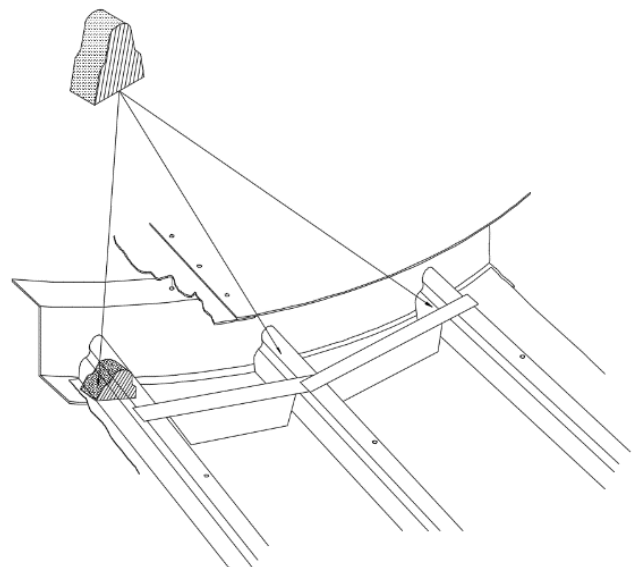
- On the roof collar
- MATERIAL: Cross-linked polyethylene foam
- Density: 28 Kg/ m3
- Lengthening 23°C (longitudinal): 121%
- Lengthening a 23°C (transversal): 115%
- Water capacity: 1%

### 2 INSULATOR ROOF EAVE

- On the roof eave
- MATERIAL: Cross-linked polyethylene foam
- Density: 28 Kg/ m3
- Lengthening 23°C (longitudinal): 121%
- Lengthening a 23°C (transversal): 115%
- Water capacity: 1%



INSULATOR ROOF WAVE



INSULATOR ROOF EAVE