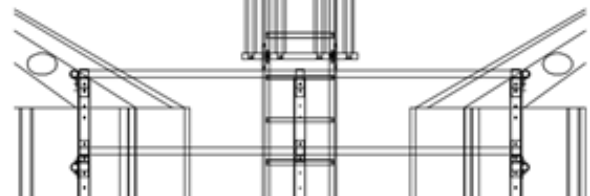
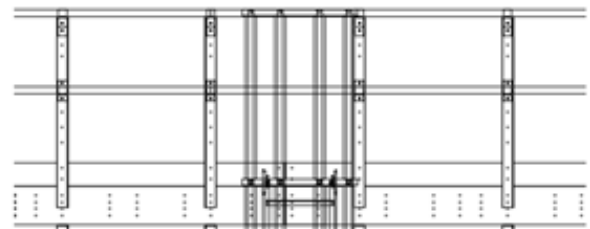
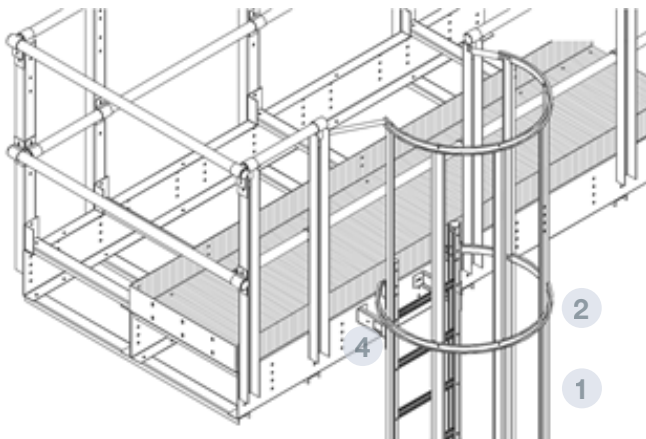


LADDER TO PLATFORM BETWEEN SILOS

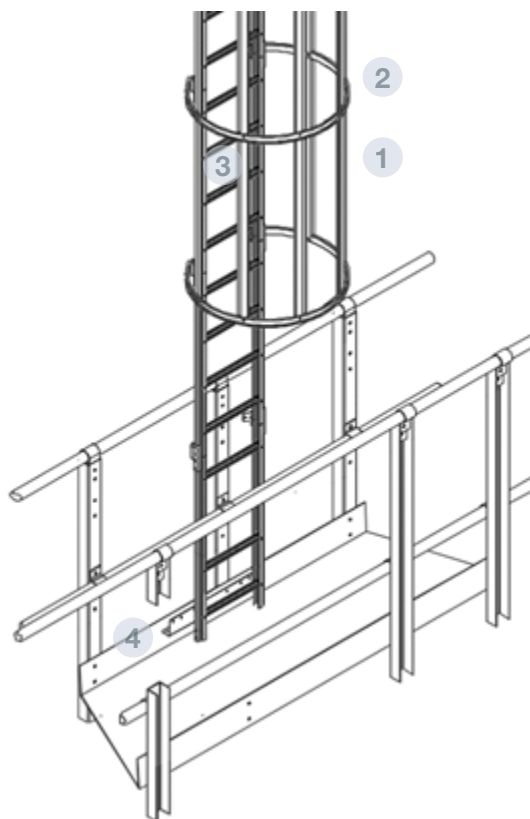
ACCESSORIES SUPPLEMENTARY STRUCTURES



TECHNICAL SPECIFICATIONS

Vertical ladder from the catwalk between silos to the main catwalk, complying with the regulation UNE-EN ISO 14222-1/2/3/4.

The ladder is connected to the platform through an angular profile and to the catwalk through the ladder support.



PARTS Y MATERIALS

- 1** RAIL
 - 5 rails located every section of 1140mm.
 - MATERIAL: Galvanized steel S 280 GD Z 600 t= 1.5 mm
- 2** SAFETY CAGE
 - 1 every section of 1140 mm
 - MATERIAL: acero galvanizado S 280 GD Z 600 t= 2 mm
- 3** RUNGS
 - Connected every 285mm section.
 - Length: 458 mm
 - MATERIAL: Galvanized steel S 280 GD Z 600 t= 1.5 mm
- 4** RAIL SUPPORT
 - Connecting the catwalk to the silo
 - MATERIAL: Galvanized steel S 280 GD Z 600 t= 3 mm
- 5** CONNECTION TO THE PLARFORM
 - "L" 60x100x600 cold formed profile for the ladder-platform connection. Galvanized steel S 280 GD Z 600 t= 3 mm