

Columns and Supports.
Accessories. Supplementary structures

COLUMN WITH HOT ROLLED PROFILES

ACCESSORIES SUPPLEMENTARY STRUCTURES



FILE 6.6
VERSION 2. 28/06/2021

COD. ASCOL02, ASCOL0233, ASSEVOLCOL02



TECHNICAL SPECIFICATIONS

The structure acts as catwalk Support at the same height as the roof support. It is used when the cold formed column solution is not enough.

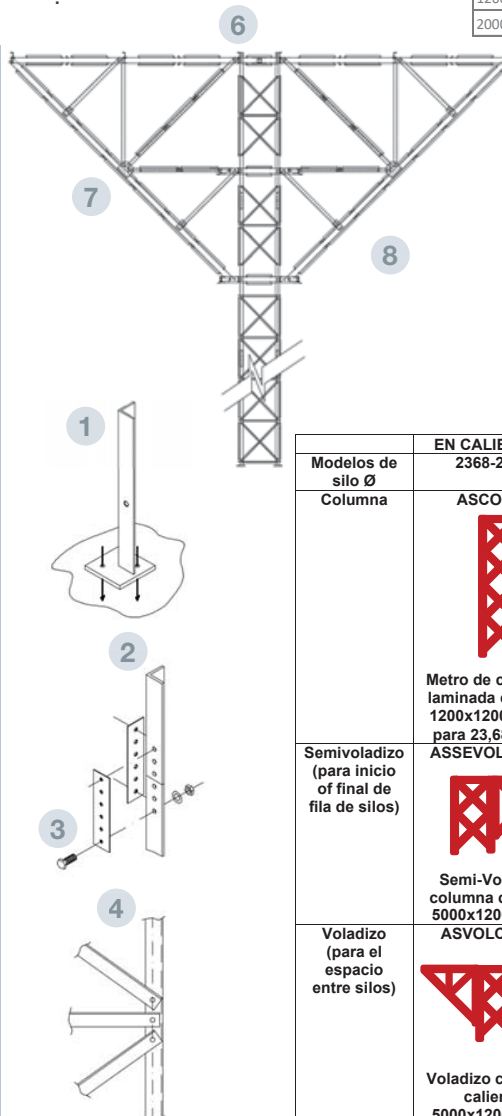
Column erected from the ground to the roof Support height, braced to the silo with an overhang on the upper part. The overhang is formed by two structural systems (inverted pyramid shape), braced to each other.

On the overhang, 6 "UPN" profiles are placed supporting the catwalk.

BASE (mm)	OVERHANG (mm)
1200 – 1200	5000 ó 6000
1260 – 1260	8000
1260 – 2000	8000 ó 10000
2000 – 2000	8000 ó 10000

PARTS AND MATERIALS

- 1 ANCHOR PLATE**
 - Connecting the pillars to the foundation.
 - Material: Galvanized steel S275JR
- 2 PILLAR "L"**
 - "L" 100x100x10 ó 120x120x12 profile, hot rolled profile, all along the column height.
 - Material: Galvanized steel S275 JR
- 3 SPLICE**
 - Rectangular splice 600x100x10mm or 600x120x10mm for pillars connection.
 - Material: Galvanized steel S275 JR
- 4 BRACING**
 - "L" 50x5 hot rolled profile.
 - Material: Galvanized steel S275 JR
- 5 CONNECTION TO SILO**
 - "L" 50x5 hot rolled profile connecting the column to the silo.
 - Material: Galvanized steel S275 JR
- 6 UPPER "UPN" PROFILE**
 - UPN200 profile, hot rolled profile supporting the "C" profile where the catwalk is placed.
 - Material: Galvanized steel S275 JR
- 7 LOWER "UPN" PROFILE**
 - UPN200 profile, hot rolled profile
 - Material: Galvanized steel S275 JR
- 8 DIAGONAL**
 - UPN200 hot rolled profile, connecting the upper UPN to the lower one.
 - Material: Galvanized steel S275 JR



	EN CALIENTE 1 2368-2598	EN CALIENTE 2 2750-3208
Modelos de silo Ø Columna	ASCOL02 	ASCOL03
	Metro de columna laminada caliente 1200x1200 válida para 23,68/25,98	Metro de columna laminada caliente 2000x2000 válida para 27,50/32,08
Semivoladizo (para inicio of final de fila de silos)	ASSEVOLCOL02 	ASSEVOLCOL03
	Semi-Voladizo columna caliente 5000x1200x1200	Semi-Voladizo columna caliente 8000x2000x2000
Voladizo (para el espacio entre silos)	ASVOLCOL02 	ASVOLCOL03
	Voladizo columna caliente 5000x1200x1200	Voladizo columna caliente 8000x2000x2000

ROOF SUPPORT

ACCESSORIES SUPPLEMENTARY STRUCTURES



FILE 6.1

VERSION 2. 21/06/2021

COD. ASSOPCU**, ASSOPCUESP, AS****SOPSIM, ASSOP00001,
ASINCVOLSOPSIM, AS****SOPDOB, ASSOP00002V



TECHNICAL SPECIFICATIONS

Formed by “U” profiles, connected to each other and mounted on the roof in order to withstand the catwalk loads.

TYPES

A CENTERED

Formed by 2 “U” 200 profiles, attached to the top cover, braced with 4 reinforcements “U” 200.

B DISPLACED

Centered roof Support not symmetrically installed for non-standard catwalk designs.

C WITH EXTENSION

Centered roof support installed with 1000mm long extensions in both sides.

D ELEVATED

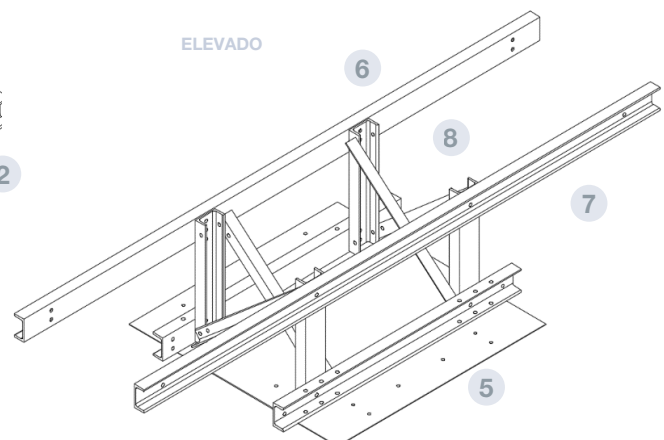
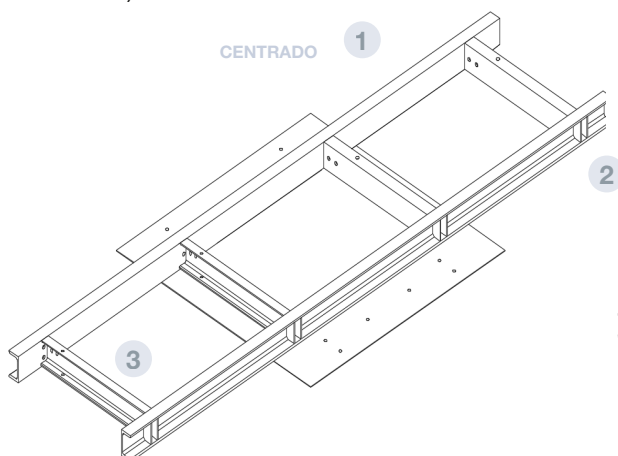
Formed by “U” 100 attached and braced with “L” 50x5 for supporting catwalks at higher levels.

Depending on the height to cover, there are 4 types:

- 1.H : (210 – 530)
- 2.H : (570 – 1050)
- 3.H : (1090 – 1570)
- 4.H : (1610 – 2090)

PARTS AND MATERIALS

- 1 **STRINGER**
 - “U” 200 profile cold formed profile, 2600mm, 2550mm or 3000mm long, acting as principal element in the structure.
 - Material: Galvanized steel S280 GD Z 600 MAC t= 3mm
- 2 **STRINGER BRACKETS**
 - Brackets system placed on the stringers reinforcing the connections with the reinforcements.
 - Material: Galvanized steel S280 GD Z 600 MAC t= 3mm
- 3 **REINFORCEMENT**
 - 4 “U” 200 profiles cold formed profiles, placed transversely.
 - Material: Galvanized steel S280 GD Z 600 MAC t= 3mm
- 4 **EXTENSION**
 - U200 profiles, 1000mm long, cold formed profiles, to be installed as stringer extensions.
 - Extensions are installed with universal rungs acting as supports in both sides.
 - Material: Galvanized steel S280 GD Z 600 MAC t= 3mm
- 5 **BASE**
 - Perfiles UPN100 hot rolled profiles.
 - Material: Galvanized steel S275 JR L=1200mm
- 6 **SUPPORTING BASE**
 - Profiles UPN100 hot rolled profiles
 - Material: Galvanized steel S275 JR L=2600mm
- 7 **PILLARS**
 - Profiles UPN100 hot rolled profiles forming the max length.
 - Material: Galvanized steel S275 JR
- 8 **BRACING**
 - Perfiles “L”50x50 for pilars bracing.
 - Material: Galvanized steel S275 JR



WALL SUPPORT

ACCESSORIES SUPPLEMENTARY STRUCTURES

TECHNICAL SPECIFICATIONS

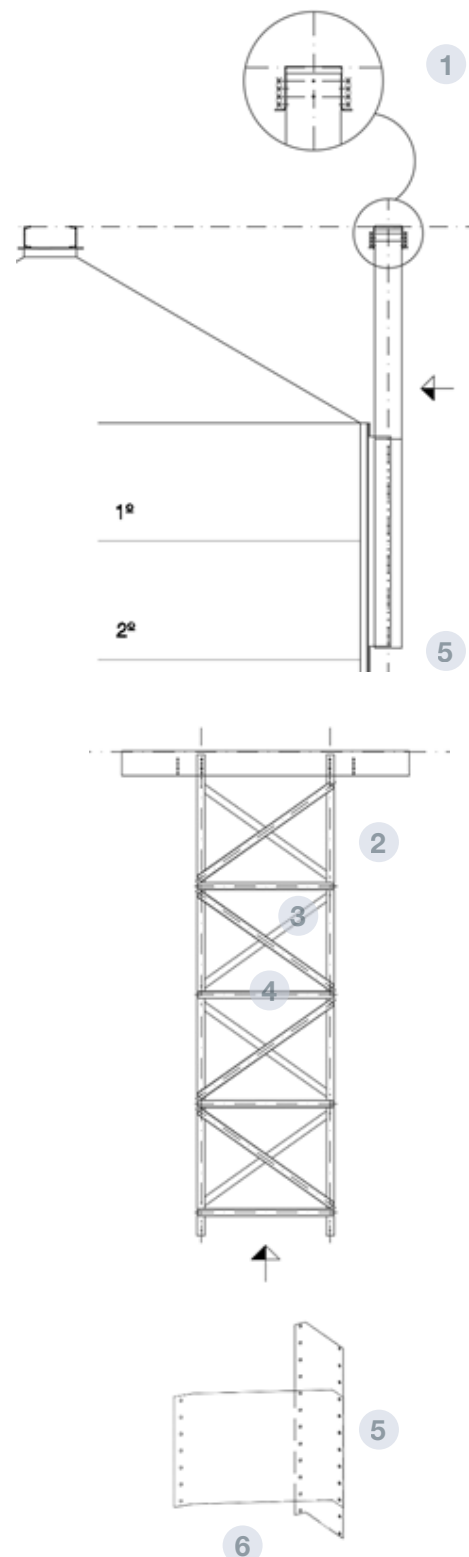
The wall support is a structure that acts as catwalk Support at the same height as the roof support.

The catwalk rests on an omega 273 profile supported by 2 "U" 263 pillars. The pillars are bracings with horizontal and inclined bracings "U" 60x50x3mm.

The whole ensemble is connected to the reinforcements through 2 wall silo angles. From the 10,70 silo model onwards, the wall silo angles are strengthened with bracings.

PARTS AND MATERIALS

- 1 **OMEGA 273**
 - OMEGA profile 273x210x2400mm cold formed profile.
 - Optionally, its length can be 3000mm
 - Material: Galvanized steel S280GD Z 600 MAC t= 3mm
- 2 **PILLAR "U" 263**
 - "U" 263 profile, cold formed profile.
 - Material: Galvanized steel S280GD Z 600 MAC t= 3mm
- 3 **INCLINED BRACING**
 - 4 "U" 60x50 profile, cold formed profile.
 - Material: Galvanized steel S280GD Z 600 MAC t= 3mm
- 4 **HORIZONTAL BRACING**
 - "U" 60x50 profile, cold formed profile.
 - Material: Galvanized steel S280GD Z 600 MAC t= 3mm
- 5 **WALL SILO ANGLE**
 - Steel sheet, 2000mm long for the pillar-reinforcement connection.
 - Material: Galvanized steel S280GD Z 600 MAC t= 3mm
- 6 **WALL SUPPORT BRACING**
 - Steel sheet, 500mm long for the wall silo angle strengthen.
 - Connected between the bodysheet and wall silo angle.
 - Material: Galvanized steel S280GD Z 600 MAC t= 3mm



WALL SUPPORT WITH INCREASE FOR OVERHANG

ACCESSORIES SUPPLEMENTARY STRUCTURES

TECHNICAL SPECIFICATIONS

The structure supports the catwalk at the same height as the roof support.

Consists of a standard wall support, adding the overhang structure.

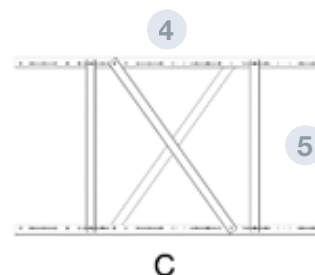
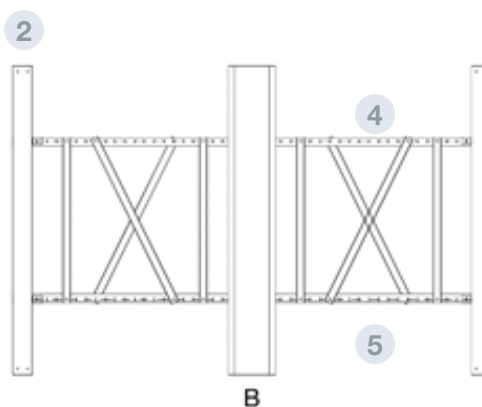
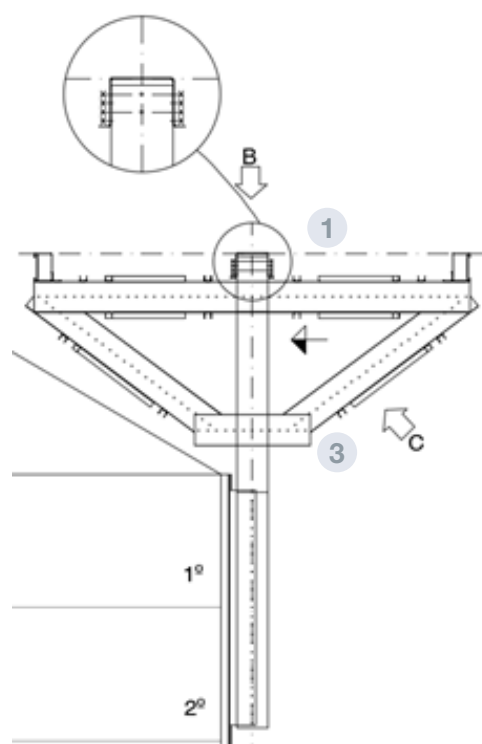
It is used when the standard wall support solution is not enough. Lengths available: 3724mm

The overhang is formed by 2 structural systems, with inverted pyramid shape, braced between each other.

On the overhang, 2 "C" profiles are supported acting as catwalks support.

PARTS AND MATERIALS

- 1 UPPER "U"**
 - "U" 263 3724mm long, supporting "C" reinforcement.
 - Material: Galvanized steel S280GD Z 600 MAC t= 3mm
- 2 "C" PROFILE**
 - Cold formed profile where the catwalk is placed.
 - For its height adjustment, the "C" profile can be 223mm, 232mm, 241mm, 250mm, 259mm, 268mm and 277mm.
 - Can be reinforced with a "U" profile with the same material.
 - Material: Galvanized steel S280GD Z 600 MAC t= 3mm
- 3 LOWER "U" PROFILE**
 - "U" 263x988 cold formed profile connected to the wall support.
 - Material: Galvanized steel S280GD Z 600 MAC t= 3mm
- 4 DIAGONAL**
 - "U" 263 profile, cold formed profile connecting the upper "U" with the lower "U".
 - Can be 1976mm or 2356mm long, depending on the overhang dimension.
 - Material: Galvanized steel S280GD Z 600 MAC t= 3mm
- 5 BRACING**
 - "U" 60x50 profile cold formed profile, bracing "U" parts between each other.
 - Variable length: 506, 936, 1120, 1266, 1280, 1362 ó 1422mm
 - Material: Galvanized steel S280GD Z 600 MAC t= 3mm



DOUBLE WALL SUPPORT WITH INCREASE FOR OVERHANG

BODY



FILE 6.4

VERSION 2. 11/08/2021

COD. AS***SOPDOB

TECHNICAL SPECIFICATIONS

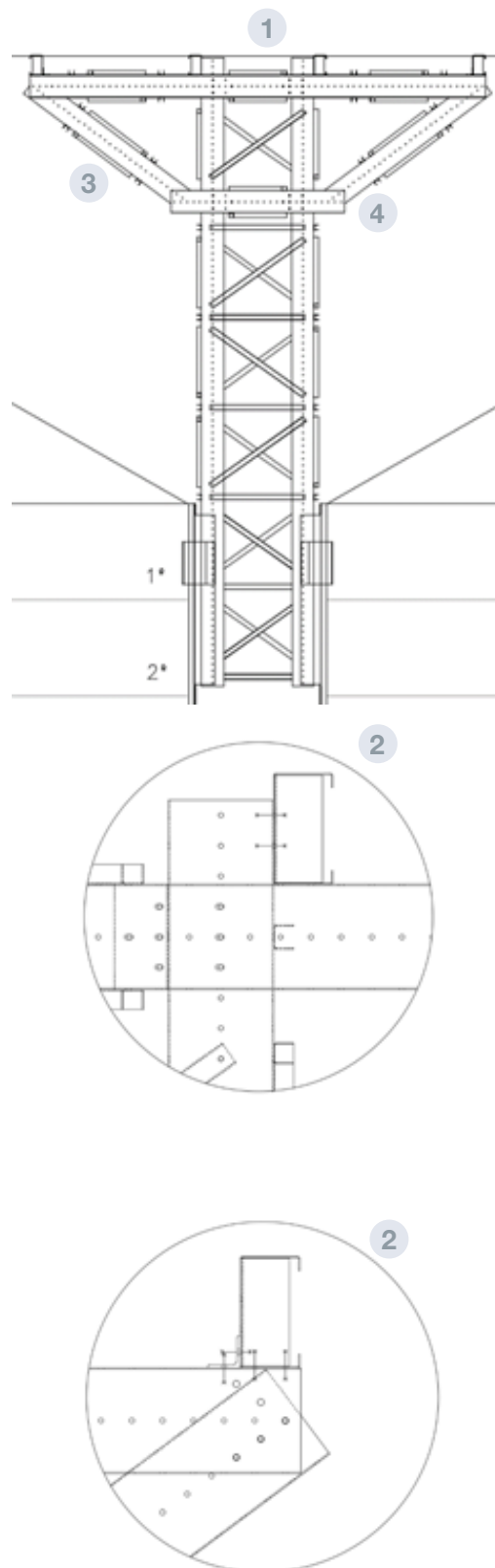
The structure supports the catwalk at the same height as the roof support.

Consists of 2 standard wall supports, adding the overhang structure.

It is used when the standard wall support solution is not enough.

Available for models between 16,80 and 24,44 with 3 different overhang dimensions: 2128, 3344 and 4560mm.

The overhang is formed by 2 structural systems, with inverted pyramid shape, braced between each other. On the overhang, 4 "C" profiles are supported acting as catwalks support.



PARTS AND MATERIALS

- 1 UPPER "U"
 - "U" 263 profile, 5396, 7828 or 10260mm long supporting the "C" profile.
 - Material: Galvanized steel S280GD Z 600 MAC t= 3mm
- 2 "C" PROFILE
 - "C" cold formed profile, where the catwalk is placed.
 - For its height adjustment, the "C" profile can be 223mm, 232mm, 241mm, 250mm, 259mm, 268mm and 277mm.
 - Can be reinforced with a "U" profile with the same material.
 - Material: Galvanized steel S280GD Z 600 MAC t= 3mm
- 3 LOWER "U" PROFILE
 - "U" 263x2052 profile cold formed profile, connected to the wall support.
 - Material: Galvanized steel S280GD Z 600 MAC t= 3mm
- 4 DIAGONAL
 - "U" 263 profile, cold formed profile, connecting upper "U" with lower "U".
 - Can be 2356, 3876 or 5396mm depending on the overhang dimension.
 - Material: Galvanized steel S280GD Z 600 MAC t= 3mm
- 5 BRACING
 - "U" 60x50 profile, cold formed profile bracing the "U" upper profiles with the "U" lower profiles. Its length changes depending on the position to be placed.
 - Material: Galvanized steel S280GD Z 600 MAC t= 3mm



Offices and Factory:

Ctra. de Arenas km. 2.300
13210 Villarta de San Juan • Ciudad Real - Spain
T: +34 926 640 475 • F: +34 926 640 294

Madrid Office:

C/Azcona, 37 • 28028 Madrid - Spain
T: +34 91 726 43 04 • F: +34 91 361 15 94

symaga@symaga.com
www.symaga.com