

Platform between silos and ladder.
Accessories. Supplementary structures

PLATFORM BETWEEN SILOS

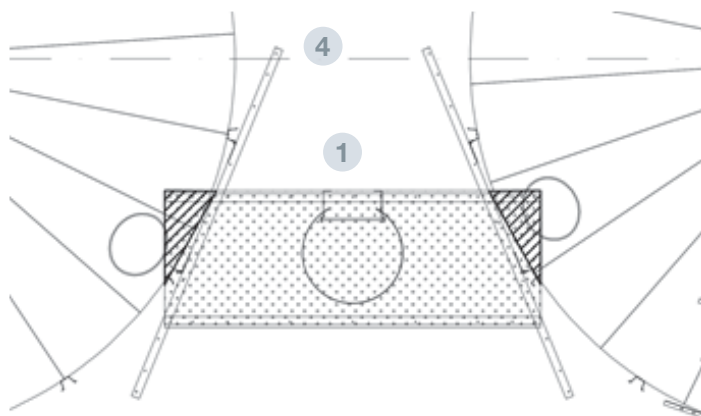
ACCESSORIES SUPPLEMENTARY STRUCTURES



FILE 6.12

VERSION 3. 21/07/2025

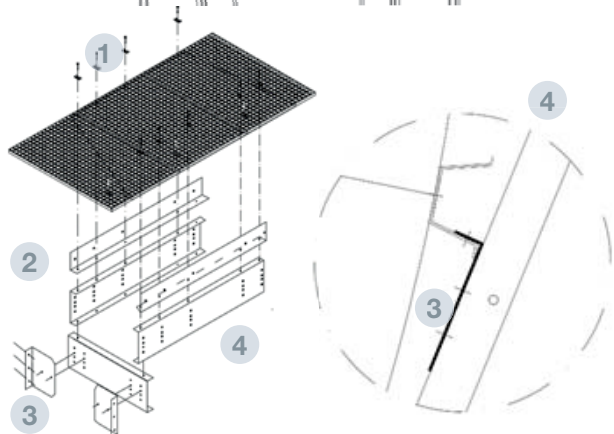
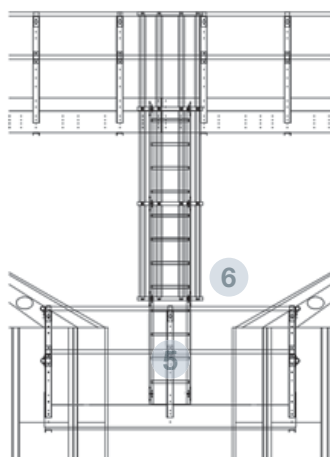
COD. ASPLATENTRE*



TECHNICAL SPECIFICATIONS

Platform supported on 4 stringers, fixed to the silo reinforcements in the penultimate ring.

Handrail is included allowing access to the inspection doors of both silos.



PARTS AND MATERIALS

- 1 FLOOR
 - Grid floor to be placed on the stringers.
 - Material: Trammex 30x30-25x2 Galvanized
- 2 FOOT PROTECTION
 - Folded sheet for the floor-stringer connection.
 - Material: Acero galvanizado S280 GD Z600 MAC t= 3mm
- 3 LEG CLIP
 - Folded sheet for the rainforce connection.
 - Material: Galvanized steel S280 GD Z600 MAC t= 3mm
- 4 STRINGER
 - "U" 263x3000 profile, folded sheet, representing the main structure of the platform.
 - Material: Galvanized steel S280 GD Z600 MAC t= 3mm
- 5 HANDRAIL BRACKET
 - "U" 263x3000 profile, folded sheet, representing the main structure of the platform.
 - Material: Galvanized steel S280 GD Z600 MAC t= 3mm
- 6 HANDRAIL TUBE
 - TUBE Ø48x3000x1,5mm
 - Material: Galvanized steel
- 7 CLIPS
 - Handrail tube- handrail bracket connection clips.
 - Material: Galvanized steel S280 GD Z600 MAC t= 3mm
- 8 STOPPER
 - Used to closet he handrail tbe at the end.
 - Material: Polypropylene

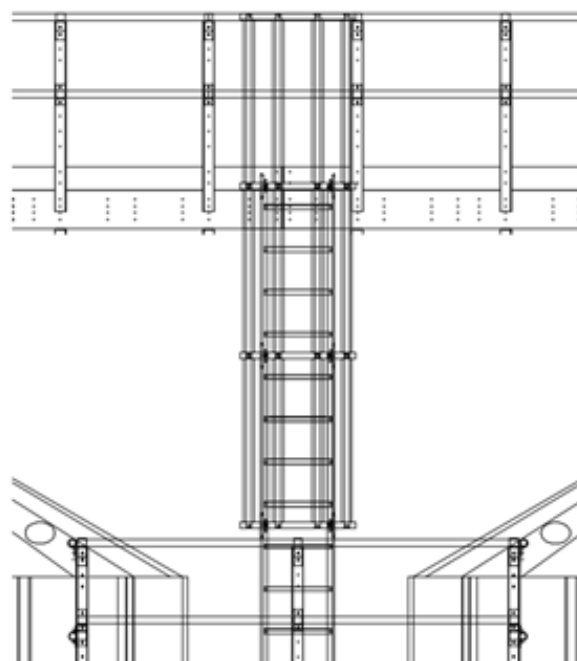
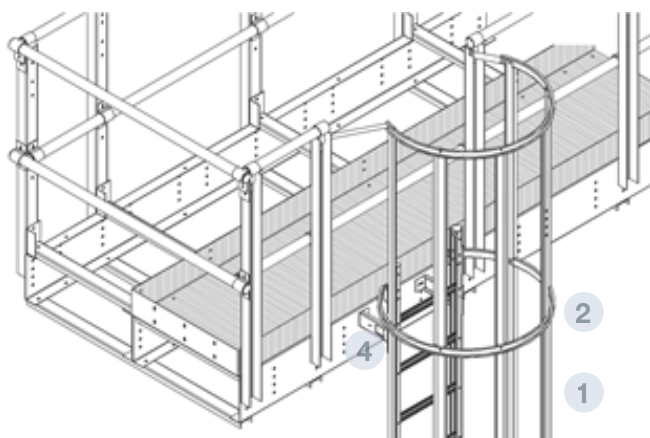
LADDER TO PLATFORM BETWEEN SILOS

ACCESSORIES SUPPLEMENTARY STRUCTURES



FILE 6.13
VERSION 2. 31/08/2021

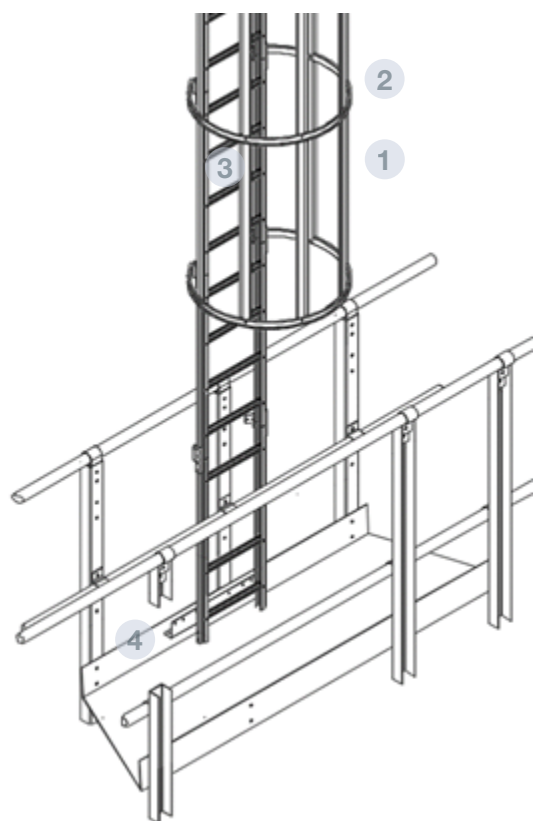
COD AS**ESC



TECHNICAL SPECIFICATIONS

Vertical ladder from the catwalk between silos to the main catwalk, complying with the regulation UNE-EN ISO 14222-1/2/3/4.

The ladder is connected to the platform through an angular profile and to the catwalk through the ladder support.



PARTS Y MATERIALS

- 1 RAIL**
 - 5 rails located every section of 1140mm.
 - MATERIAL: Galvanized steel S 280 GD Z 600 t= 1.5 mm
- 2 SAFETY CAGE**
 - 1 every section of 1140 mm
 - MATERIAL: acero galvanizado S 280 GD Z 600 t= 2 mm
- 3 RUNGS**
 - Connected every 285mm section.
 - Length: 458 mm
 - MATERIAL: Galvanized steel S 280 GD Z 600 t= 1.5 mm
- 4 RAIL SUPPORT**
 - Connecting the catwalk to the silo
 - MATERIAL: Galvanized steel S 280 GD Z 600 t= 3 mm
- 5 CONNECTION TO THE PLATFORM**
 - "L" 60x100x600 cold formed profile for the ladder-platform connection. Galvanized steel S 280 GD Z 600 t= 3 mm



Offices and Factory:

Ctra. de Arenas km. 2.300
13210 Villarta de San Juan • Ciudad Real - Spain
T: +34 926 60 294

Madrid Office:

C/Azcona, 37 • 28028 Madrid - Spain
T: +34 91 726 43 04

symaga@symaga.com
www.symaga.com