

**Linning. Roof, Cylinder & Hopper**  
**Accessories. External Finished.**

## CYLINDER LINING

## ACCESSORIES EXTERNAL FINISHES



FILE 5.26  
VERSION 3. 04/08/2025

COD. ASFORROTO\*\*\*\*B



## TECHNICAL SPECIFICATIONS

Double wall, normally pre-lacquered, that creates a 70mm width air chamber between the cylinder body and cylinder cover in order to improve thermal isolation.

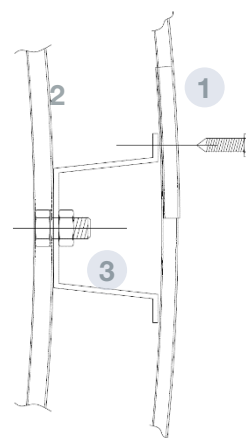
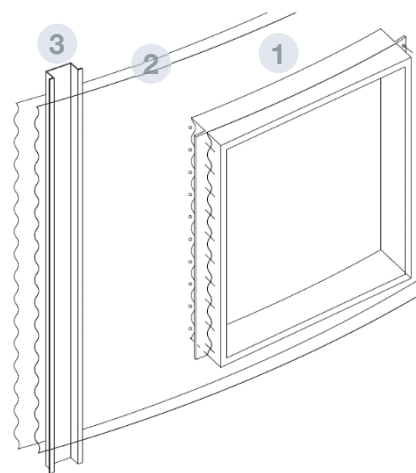
Installed by using self-drilling bolts at reinforcements flanges.

Protection against solar radiation on the grain adhered at the bodysheets.

In order to improve its qualities, filling the air chamber with some insulating material can be done, as stone wool.

## RECOMMENDATIONS

Install in high-level solar radiation places or rainy places in order to avoid rice getting yellow (default protection "sandblasting").



## PARTS AND MATERIALS

- 1 CYLINDER COVER**
- Corrugated bodysheet with dimensions: 1140x2600 mm
  - Colors: White, Green or Blue.
  - MATERIAL: S280 GD Z225 GS 25/7 e=0.6 mm

- 2 STANDARD BODYSHEET**

- 3 STANDARD REINFORCEMENT**

## ROOF LINING

## ACCESSORIES EXTERNAL FINISHES



FILE 5.25  
VERSION 3. 16/07/2025

**COD.** ASFORROT\*\*\*\*B, ASFORROT\*\*\*\*V, ASFORROT\*\*\*\*M,  
ASFORROT\*\*\*\*G, ASFORROV\*\*\*\*/018, ASFORROV\*\*\*\*/01V, ASFO-  
RROV\*\*\*\*/01G, ASFORROC\*\*\*\*/T45B, ASFORROC\*\*\*\*/T66B,  
ASFORROC\*\*\*\*/T45V, ASFORROC\*\*\*\*/T66V, ASFORROC\*\*\*\*/T60V,



## TECHNICAL SPECIFICATIONS

Double sheet roof,

Doble pared de chapa, normalmente prelacada, que crea una cámara de aire de 75 mm entre sectores de techo y forro.

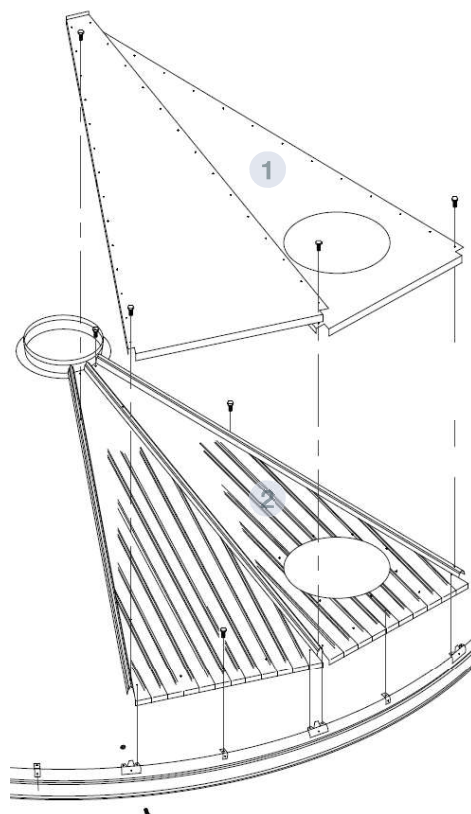
It's a protection of the high solar radiation to the grain close to the roof.

To improve the characteristics the space between roof sector and roof cover can be filled with insulating materials, like rock wool.

## RECOMMENDATIONS

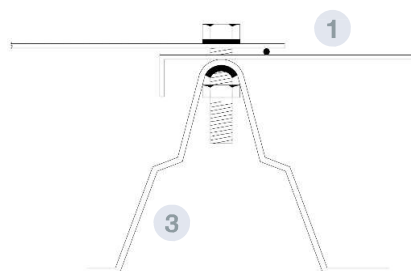
Install on places with high solar radiation.  
Avoid yellowing the rice.

**INCOMPATIBILITIES** Incompatible on silo tightness,



## PARTS AND MATERIALS

- 1 ROOF COVER**
  - Flat sheet with isosceles triangular shape, like a roof sector, screwed over the roof waves
  - Variable dimensions according to the silo's diameter
  - Colours white, green or blue
  - MATERIAL: steel S280GD Z225 GS 25/7 µm de polyester e=0.8 mm
- 2 ROOF SHEET**
  - Trapezoidal folded plate with waves on the edges to be assembled between them
  - Material: steel S280 GD ZM310 e= 0.8mm
- 3 ROOF WAVE**
  - Folded sheet to assemble the roof sectors between them



## HOPPER LINING

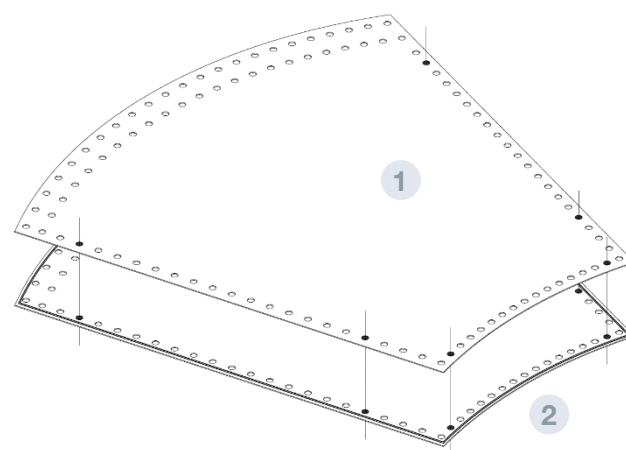
## ACCESSORIES EXTERNAL FINISHES



FILE 5.27

VERSION 2. 13/08/2021

COD. ASFORROTO\*\*\*\*B



## TECHNICAL SPECIFICATIONS

Steel sheet located on the hopper sheets due to aesthetic qualities.

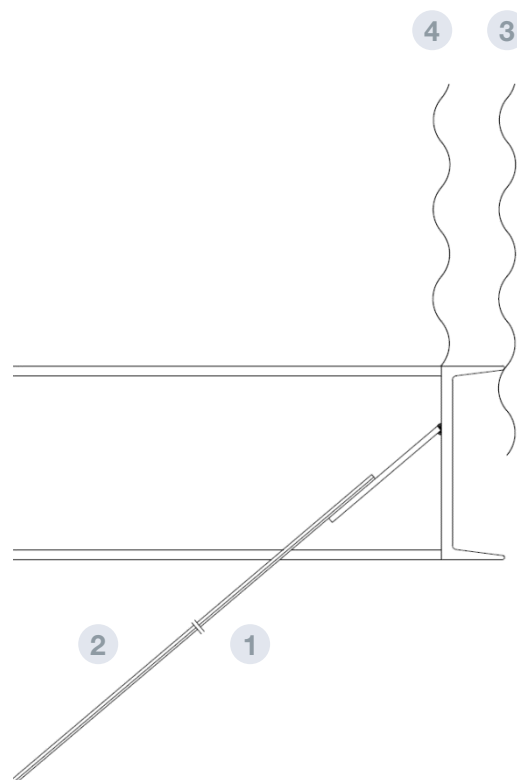
Does not create air chamber.

### INSTALLATION:

1. Bolted joint hopper sector – hopper cover in several points.
2. Standard installation on the hopper.

## PARTS AND MATERIALS

- 1 HOPPER COVER**
  - Steel sheet with trapezoidal shape, similar to a hopper sheet.
  - Colors White, Green or blue.
  - MATERIAL: DX51 Z225 GS 25/7
- 2 HOPPER SHEET**
- 3 CYLINDER COVER**
- 4 BODYSHEET**





**Offices and Factory:**

Ctra. de Arenas km. 2.300  
13210 Villarta de San Juan • Ciudad Real - Spain  
T: +34 926 6294

**Madrid Office:**

C/Azcona, 37 • 28028 Madrid - Spain T:  
+34 91 726 43 04

[symaga@symaga.com](mailto:symaga@symaga.com)  
[www.symaga.com](http://www.symaga.com)