

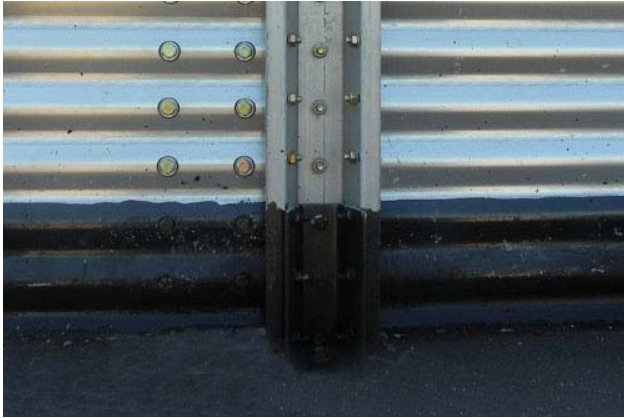
SEALING FOUNDATION

ACCESSORIES CYLINDER



FILE 5.54
VERSIÓN 2. 15/04/2026

COD. ASBHXXXSECIMEN



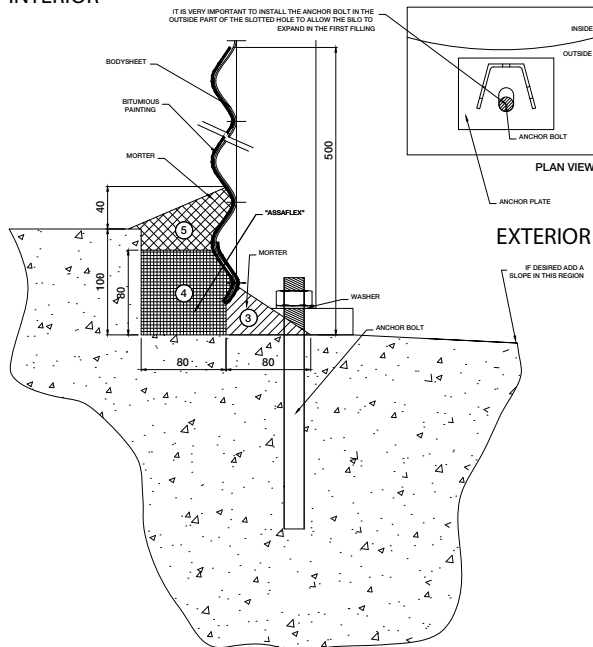
DESCRIPTION

A perimeter sealing system between the foundation and the bodysheet comprising a bituminous primer, asphalt emulsion and finish mortar, ensuring a watertight seal against water ingress.

ADAVANTAGES

Prevents water ingress, thereby reducing the risk of grain dampness.

INTERIOR



PROCEDURE FOR SEALING THE FOUNDATION

1. Clean the area around the silo and paint the underside of the bodysheet with bituminous paint (both inside and out).
- 2.- Install a retaining wall (mortar is sufficient) on the outside of the silo to prevent the hot bituminous emulsion from escaping from the silo.
- 3.- Pour bituminous emulsion between the foundation wall and the bodysheet.
- 4.- Once the bituminous emulsion has set, fill the remaining gap with mortar.

SCOPE OF SUPPLY

Supplied by Symaga:

- Low-viscosity, fast-drying bituminous primer (cold-applied)
- Hot-applied elastomeric bituminous material (SBS type)

Supplied by the client:

- Cementitious mortar required for slopes and backfills.